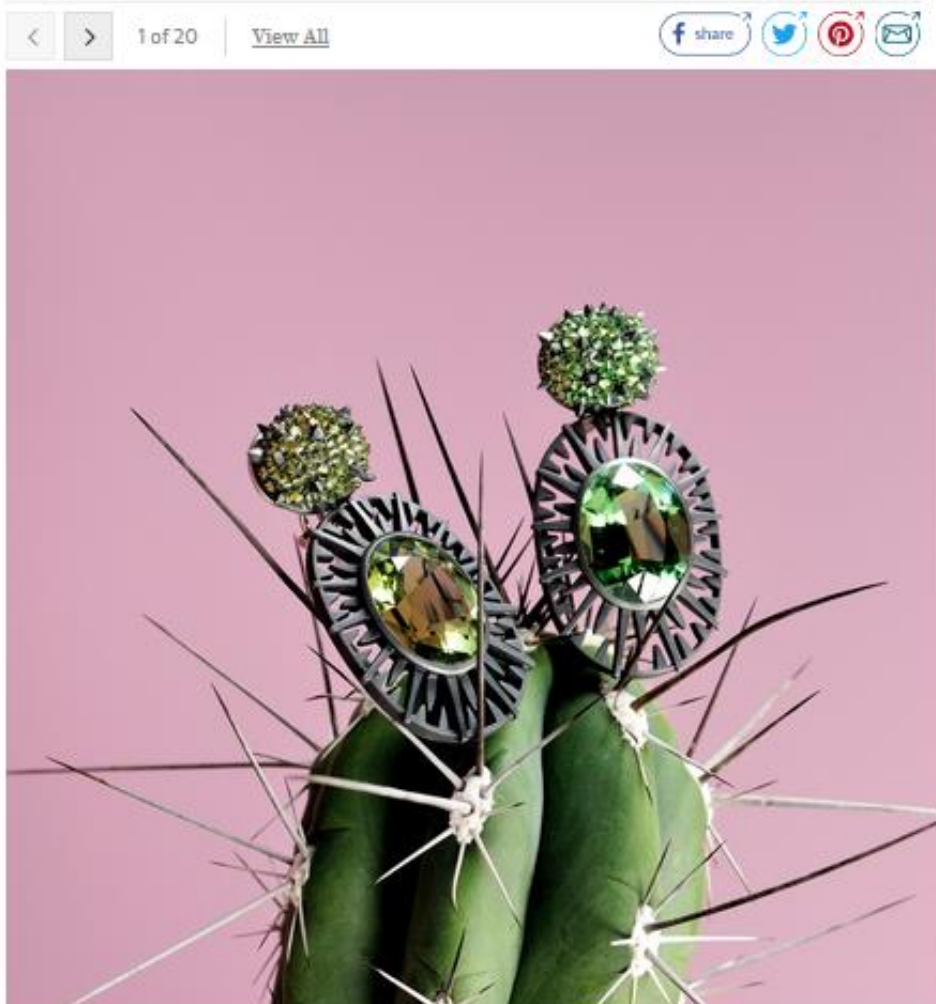


02 Oct 2017

## PAD jewellery highlights



Jewellery has become an integral part of London's PAD fair; from contemporary pieces by Suzanne Syz and Hemmerle, to rare vintage finds at Siegelson and artists' jewels at Louisa Guinness Gallery. As the 2017 fair opens in Berkeley Square, we select the standout pieces.

*PAD London is at Berkeley Square from 2-8 October, [pad-fairs.com](http://pad-fairs.com)*

Hemmerle earrings in silver and white gold  
with tourmalines and demantoids



Sapphire, emerald and ruby Hindu necklace by Suzanne Belperron, Paris, circa 1948, at Siegelson

CREDIT: COURTESY OF SIEGELSON



Suzanne Syz 'Want a mint?' ring in pink gold and enamel with green cushion-cut tourmaline, paraiba tourmalines and diamonds

CREDIT: COURTESY OF SUZANNE SYZ



Corum 18-carat yellow gold and peacock feather watch, circa 1970, at Karry Berreby

CREDIT: MICHEL BURJ/COURTESY OF GABRY #808561



Christopher Thompson Royds, Natura Morta Red Clover  
Silver necklace at Louisa Guinness Gallery

CREDIT: COURTESY OF LOUISA GUINNESS GALLERY



Hemmerle earrings in bronze and white gold with zircons  
and diamonds



Ruby, rose quartz and enamel Fleur brooch by Suzanne  
Belperron, Paris, circa 1936, at Siegelson

CREDIT: COURTESY OF SIEGELSON



Suzanne Syz 'You're the one that I want' earrings in pink gold and bronze with diamond slices, fancy brown yellow diamonds, cushion-cut spinels, diamond discs, brown diamonds and cognac diamonds

CREDIT: COURTESY OF SUZANNE SYZ



Sophia Vari Medee II Ring, 2010, in 18-carat gold with ebony and pearl at Louisa Guinness Gallery

CREDIT: COURTESY OF LOUISA GUINNESS GALLERY



Coral, onyx and diamond Serpenti bracelet-watch by Bulgari, Italy, circa 1960, at Siegelson

CREDIT: COURTESY OF SIEGELSON



Suzanne Syz Belle de jour ring in titanium with Burmese sapphire, diamonds and pearls

CREDIT: COURTESY OF SUZANNE SYZ



Hemmerle earrings in white gold and copper with diamonds and jade



Art Deco coral, onyx and diamond bracelet by Cartier, Paris, 1922, at Siegelson

CREDIT: COURTESY OF SIEGELSON



Contemporary earrings in yellow gold with diamonds, tanzanite, micro mosaic and lapis lazuli at Karry Berreby

CREDIT: MICHEL BURJ/COURTESY OF KARRY BERREBY



'Inheritance Jewels': Victorian-era English rings inspired by Indian jewellery, in silver and gold vermeil with diamonds, ruby, sapphires, emeralds, citrines and amethysts, at Ma Tei

CREDIT: CEDRIC PORCHEZ/COURTESY OF MA TEI



Claude Lalanne, Untitled Necklace at Louisa Guinness Gallery

CREDIT: COURTESY OF LOUISA GUINNESS GALLERY



Suzanne Syz 'Are you Calder or not?' earrings in aluminium and red gold with aquamarines briolette drops and morganite briolette drops

CREDIT: COURTESY OF SUZANNE SYZ



Hemmerle box in rock crystal and bronze with peridot



Ma Tei necklace with 6th-12th century Zoomorph beads, crystal, gold and ruby

CREDIT: TH. HENNOQUE/COURTESY OF MA TEI



Contemporary Summer Palace necklace in 18-carat gold with pearl, jade and sapphire at Karry Berreby

CREDIT: MICHEL BURY/COURTESY OF KARRY BERREBY